

vtech[®]
Baby

User's Manual

Bathtime Bubbles Whale



© 2013 VTech
Printed in China
91-002860-005

VTech understands that a child's needs and abilities change as they grow and with that in mind we develop our toys to teach and entertain at just the right level...

vtech Baby

Toys that will stimulate their interest in different textures, sounds and colours

I am...

...responding to colours, sounds and textures

...understanding cause and effect

...learning to touch, reach, grasp, sit-up, crawl and toddle

Birth-36 months



Pre-School

Interactive toys to develop their imagination and encourage language development

I want...

...to get ready for school by starting to learn the alphabet and counting

...my learning to be as fun, easy and exciting as can be

...to show my creativity with drawing and music so my whole brain develops

3-6 years



Electronic Learning Computers

Cool, aspirational and inspiring computers for curriculum related learning

I need...

...challenging activities that can keep pace with my growing mind

...intelligent technology that adapts to my level of learning

...National Curriculum based content to support what I'm learning at school

4-10 years

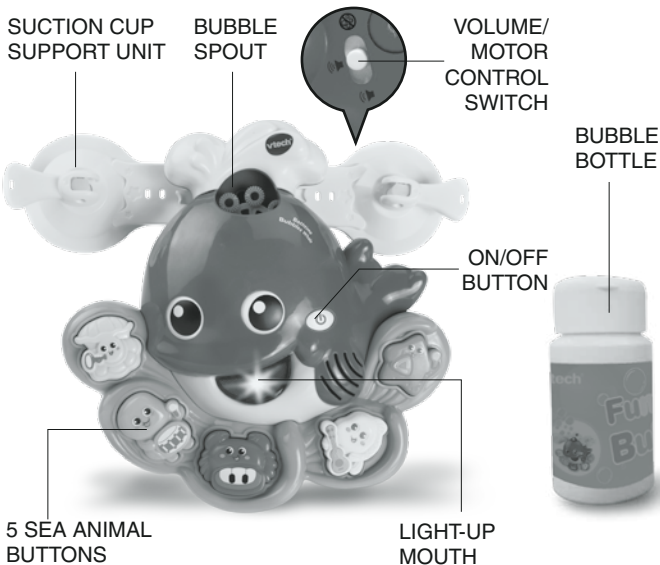


To learn more about this and other VTech® products, visit www.vtechuk.com

INTRODUCTION

Thank you for purchasing the **VTech® Bathtime Bubbles Whale** learning toy!

Have a whale of a time in the bath with the **VTech® Bathtime Bubbles Whale!** This cute bathtime companion features bubble blowing technology that releases bubbles in time with the music and sounds. There are 5 big bright buttons that introduce the happy animal friends, colours and instruments; along with jolly tunes, fun sounds and great sing-along songs! It also features two strong suction cups that allow the whale to be attached to the bathroom wall.



INCLUDED IN THIS PACKAGE

- One VTech® Bathtime Bubbles Whale
- One suction cup support unit
- One bubble bottle
- One instruction manual

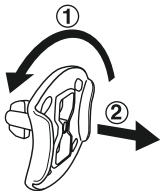
WARNING:

All packing materials, such as tape, plastic sheets, packaging locks and tags are not part of this toy, and should be discarded for your child's safety.

NOTE:

Please keep this instruction manual as it contains important information.

Unlock the packing locks:

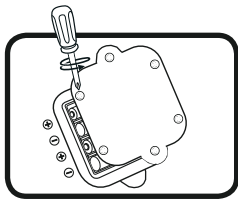


- ① Rotate the packing locks 90 degrees counter-clockwise.
- ② Pull out the packing locks.

INSTRUCTIONS

BATTERY INSTALLATION

1. Make sure the unit is turned **OFF** and the battery cover, battery box and unit are all dry.
2. Locate the battery cover on the back of the unit. Use a screwdriver to loosen the screws.
3. Install 4 new AA (AM-3/LR6) batteries following the diagram inside the battery box. (The use of new alkaline batteries is recommended for maximum performance.)
4. Replace the battery cover and tighten the screw to secure the battery cover. When closing the battery cover ensure that the screws are securely tightened. This will avoid any water leakage.



BATTERY NOTICE

- Use new alkaline batteries for maximum performance.
- Use only batteries of the same or equivalent type as recommended.
- Do not mix different types of batteries: alkaline, standard (carbon-zinc) or rechargeable (Ni-Cd, Ni-MH), or new and used batteries.
- Do not use damaged batteries.
- Insert batteries with the correct polarity.
- Do not short-circuit the battery terminals.
- Remove exhausted batteries from the toy.
- Remove batteries during long periods of non-use.
- Do not dispose of batteries in fire.
- Do not charge non-rechargeable batteries.
- Remove rechargeable batteries from the toy before charging (if removable).

Disposal of batteries and product



The crossed-out wheellie bin symbols on products and batteries, or on their respective packaging, indicates they must not be disposed of in domestic waste as they contain substances that can be damaging to the environment and human health.



The chemical symbols Hg, Cd or Pb, where marked, indicate that the battery contains more than the specified value of mercury (Hg), cadmium (Cd) or lead (Pb) set out in Battery Directive (2006/66/EC).

The solid bar indicates that the product was placed on the market after 13th August, 2005.

Help protect the environment by disposing of your product or batteries responsibly.

For more information, please visit:

www.recycle-more.co.uk

www.recyclenow.com

PRODUCT ASSEMBLY

With the **VTech® Bathtime Bubbles Whale**, safety comes first. To ensure your child's safety, adult assembly is required.

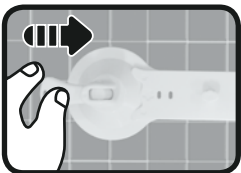
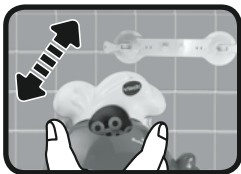
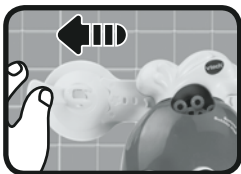
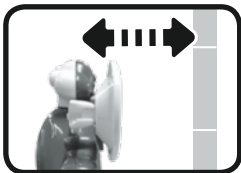
1. Carefully fill the bubble reservoir with bubble solution. Do not overfill as this may cause the bubble solution to spill. Do not dilute the bubble solution, using concentrated bubble solution will produce the best bubbles.



2. Choose a surface on the wall surrounding the bath where the suction cup support unit can be mounted securely. The area should be clean and dry before suctioning the unit to the wall.

For better suction, we suggest wetting the suction cups before attaching them to the wall. Press the suction cups onto the wall and flip the tabs out to secure the suction cup support unit. Once the unit is attached to the wall, test the strength of the suction by pulling gently on the unit. The suction cups may not stick properly to textured tiles. We recommend that the unit be removed from the wall after each use as the strength of the suction cups cannot support prolonged use.

3. To remove the whale from the suction cup support unit, press the release buttons on either side of the bubble spout and pull gently on the whale.
4. To remove the suction cup support unit from the wall, flip the tabs on the suction cup support unit towards the centre.



WARNING:

To prevent the risk of injuries, do not attach the VTech® Bathtime Bubbles Whale any higher than a child's head height when sitting in the bath.

PRODUCT FEATURES

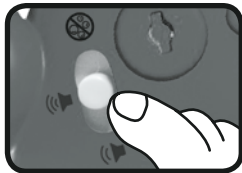
1. ON/OFF BUTTON

To turn the unit **ON**, press the **ON/OFF BUTTON**. To turn the unit **OFF**, press the **ON/OFF BUTTON** a second time.



2. VOLUME/MOTOR CONTROL SWITCH

Slide the **VOLUME/MOTOR CONTROL SWITCH** to the **LOW VOLUME** (🔊) or **HIGH VOLUME** (🔊) position. To turn off the bubble motor, slide the **VOLUME/MOTOR CONTROL SWITCH** to the **MOTOR OFF** (🚫) position.



3. AUTOMATIC SHUT-OFF

To preserve battery life, the **VTech® Bathtime Bubbles Whale** will automatically power-down after approximately seven minutes without input. The unit can be turned on again by pressing any button. Please note, sliding the volume/motor control switch will not turn the unit back on.

WARNING:

- Batteries must be changed by an adult.
- We do not recommend submerging the unit in the water. If the unit does get submerged in the water, please dry the unit completely before adding the bubble solution.
- To prevent drowning, never leave a child unattended in the bath.
- Use a thermometer to check the temperature of the water before sitting a child in the bath. Toddlers have very sensitive skin and can burn easily if the water is too hot.
- For best results, use only high quality bubble solution.
- Do not drink the bubble solution.
- In case of eye contact, immediately rinse the eye with clean water.
- Please check the suction cups periodically as they may detach after prolonged use.
- Use caution when handling the unit when the reservoir is full of bubble solution, the bubble solution can spill easily.
- When the unit will not be used for an extended period of time, empty the bubble solution from the reservoir and wipe the unit clean with a damp cloth.
- Children should not play with the suction cups when the unit is fastened to the wall as the unit may detach and cause injuries.
- Do not clean the bubble wand with cleaning products. Cleaners may have a negative impact on the bubble effect.
- Do not touch the bubble wand when the bubble motor is turned on.
- This product may contain inactive ingredients, which can cause allergic reactions or other problems. Talk to your doctor for more details.

ACTIVITIES

1. Press the **on/off button** to turn the unit on. You will hear a fun sound, a playful melody and an introductory phrase. The light will flash and the bubbles will blow with the sound.
2. Press the **5 sea animal buttons** to hear sing-along songs, playful sounds, animal names, instrument names, colours and melodies. The light will flash and the bubbles will blow with the sound.



MELODY LIST

1. Sailing, Sailing
2. My Bonnie Lies Over the Ocean
3. Row, Row, Row Your Boat
4. Rub-a-dub-dub
5. Sailor's Hornpipe
6. For He's a Jolly Good Fellow
7. A-Tisket, A-Tasket
8. London Bridge
9. Polly Put the Kettle On
10. Skip To My Lou

Sing-Along Song Lyrics

Sing-Along Song 1

Bubbles, bubbles all around.
Popping bubbles up and down.
Bubbles popping to and fro.
Bubbles put on quite a show!

Sing-Along Song 2

Little green turtle in the sea,
Tapping on his drum, 1-2-3!

Sing-Along Song 3

The cute little crab likes to play the piano.
Her two big claws move up the scale.

Sing-Along Song 4

Playful fishy, swimming free,
Plucking and strumming the guitar in the sea.

CARE & MAINTENANCE

1. Remove the unit from the wall after each use.
2. Keep the unit clean by wiping it with a slightly damp cloth.
3. Keep the unit out of direct sunlight and away from any direct heat source.
4. To prevent a build up of residue in the bubble reservoir, rinse the bubble reservoir with warm water.
5. Make sure to dry all the elements of the unit before storing.
6. Remove the batteries when the unit will not be in use for an extended period of time.
7. Do not drop the unit on hard surfaces and do not expose the unit to moisture or water.

TROUBLESHOOTING

If for some reason the program/activity stops working or malfunctions, please follow these steps:

1. Please turn the unit **OFF**.
2. Interrupt the power supply by removing the batteries.
3. Let the unit sit for a few minutes, then replace the batteries.
4. Turn the unit **ON**. The unit should now be ready to play again.
5. If the product still does not work, replace with an entire set of new batteries.

If the problem persists, please call our Consumer Services Department on 01235 546810 (from UK) or +44 1235 546810 (outside UK) and a service representative will be happy to help you.

IMPORTANT NOTE:

Creating and developing **VTech®** products is accompanied by a responsibility that we take very seriously. We make every effort to ensure the accuracy of the information, which forms the value of our products. However, errors sometimes can occur. It is important for you to know that we stand behind our products and encourage you to call our Consumer Services Department on 01235 546810 (from UK) or +44 1235 546810 (outside UK), with any problems and/or suggestions that you might have. A service representative will be happy to help you.

**CLASS 1
LED PRODUCT**



PRODUCT WARRANTY



Thank you for choosing this quality product from VTech. We hope it will bring many hours of entertainment, imaginative play and learning.

1. The product detailed above is covered by a one year warranty from the date of purchase, against any defects in materials or workmanship.
2. The product may be returned to the place of purchase. Alternatively the product can be returned to VTech Electronics Europe plc (see address below), with proof of purchase, without proof of purchase no replacement will be provided.
3. VTech Electronics Europe plc will examine the product and if it is found to be defective due to faulty materials or workmanship, will replace the product at their discretion.
4. If the product covered by this warranty is damaged due to misuse, modification or unauthorised repair, or because of faulty batteries, battery discharge or incorrect electrical connections, then this warranty becomes void.
5. This warranty is personal to the original purchaser and is not transferable.
6. Breakages to the LCD screen are not covered by the warranty.
7. Returns to VTech Electronics Europe plc should include a cheque or postal order for £1.50 towards the cost of return postage and packaging.
8. Products returned to VTech Electronics Europe plc, should be addressed as follows and packed carefully to avoid damage in transit (Please do not include batteries or adaptor).
Please include details of the fault together with your name and address.

VTech Electronics Europe plc, c/o Tablogix Limited, 200 Milton Park, Abingdon, Oxon OX14 4TA

THIS WARRANTY IS OFFERED AS AN EXTRA BENEFIT AND DOES NOT AFFECT CONSUMERS' STATUTORY RIGHTS.

This warranty is valid for the UK and Eire only. For products purchased outside the UK and Eire, please contact your local distributor or place of purchase.

